

# 1255AY4R7M#

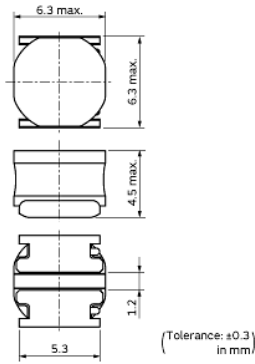
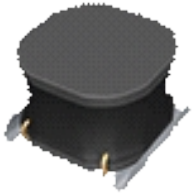
“#” indicates a package specification code.



< List of part numbers with package codes >

1255AY4R7M=P3

## Appearance & Shape



## References

Packaging	Specifications	Minimum Order Quantity
=P3	330Embossed Tape	1500

Mass (typ.)	
1 piece	0.562g

## Notices

Rated current ( $I_{sat}$ ) is specified when the decrease of the initial inductance value at 30%. Rated current ( $I_{temp}$ ) is specified when temperature of the inductor is raised 40°C by DC current.

### Attention

- This datasheet is downloaded from the website of Murata Manufacturing Co., Ltd. Therefore, it's specifications are subject to change or our products in it may be discontinued without advance notice. Please check with our sales representatives or product engineers before ordering.
- This datasheet has only typical specifications because there is no space for detailed specifications. Therefore, please review our product specifications or consult the approval sheet for product specifications before ordering.

# 1255AY4R7M#

“#” indicates a package specification code.

## Specifications

L size	6.0±0.3mm
W size	6.0±0.3mm
T size	4.5mm
Size code inch (mm)	2424 (6060)
Inductance	4.7μH±20%
Inductance Test Frequency	0.1MHz
Rated current (I <sub>sat</sub> ) (Based on Inductance change)	4500mA
Rated current (I <sub>temp</sub> ) (Based on Temperature rise)	4000mA
Max. of DC resistance	0.0276Ω
Operating Temperature Range (Self-temperature rise is included)	-40°C to 85°C
Class of magnetic shield	Magnetic Resin
DC Resistance Intermediate Values	0.023Ω±20%
Series	DG6045C

### Attention

1.This datasheet is downloaded from the website of Murata Manufacturing Co., Ltd. Therefore, it's specifications are subject to change or our products in it may be discontinued without advance notice. Please check with our sales representatives or product engineers before ordering.

2.This datasheet has only typical specifications because there is no space for detailed specifications.

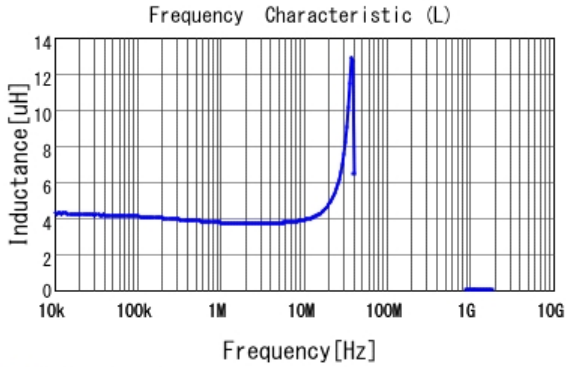
Therefore, please review our product specifications or consult the approval sheet for product specifications before ordering.

# 1255AY4R7M#

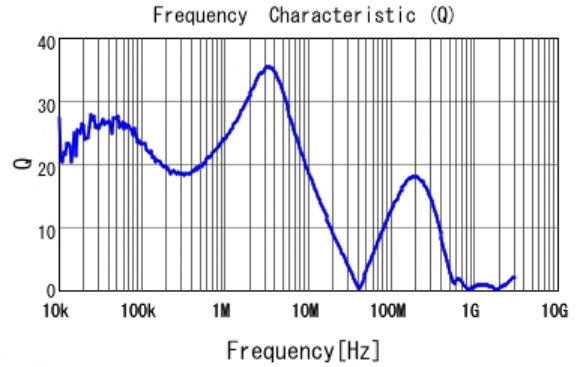
"#" indicates a package specification code.

## Characteristic Data

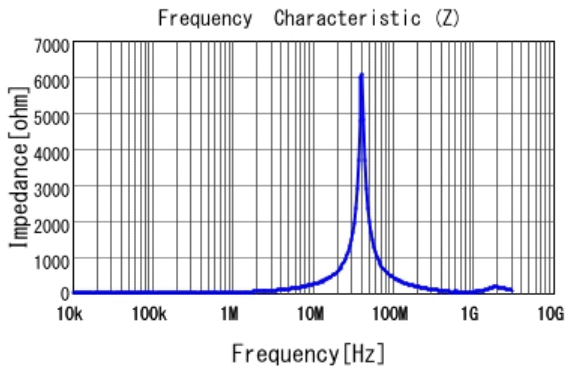
The charts below may show another part number which shares its characteristics.



■ 1255AY-4R7M L



■ 1255AY-4R7M Q



■ 1255AY-4R7M |Z|

**Attention**

- 1.This datasheet is downloaded from the website of Murata Manufacturing Co., Ltd. Therefore, it's specifications are subject to change or our products in it may be discontinued without advance notice. Please check with our sales representatives or product engineers before ordering.
  - 2.This datasheet has only typical specifications because there is no space for detailed specifications.
- Therefore, please review our product specifications or consult the approval sheet for product specifications before ordering.